



MONTHLY MEMBERSHIP PROGRESS REPORT

District 321C2

Results as of: 06/30/2019

GMT: ANIL TULSYAN

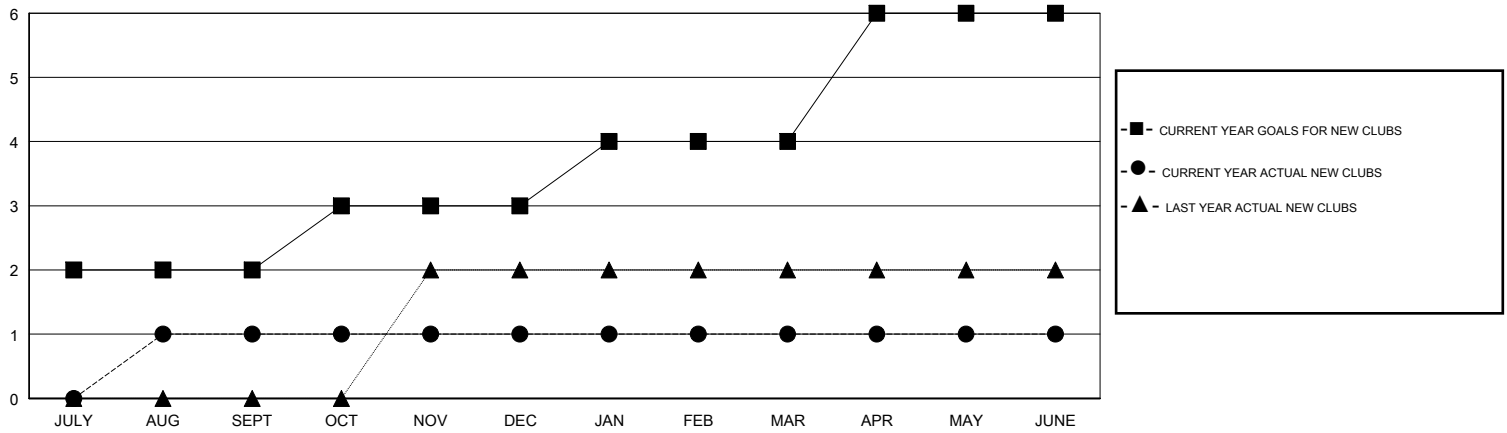
LOCATION INDIA

GMT CA

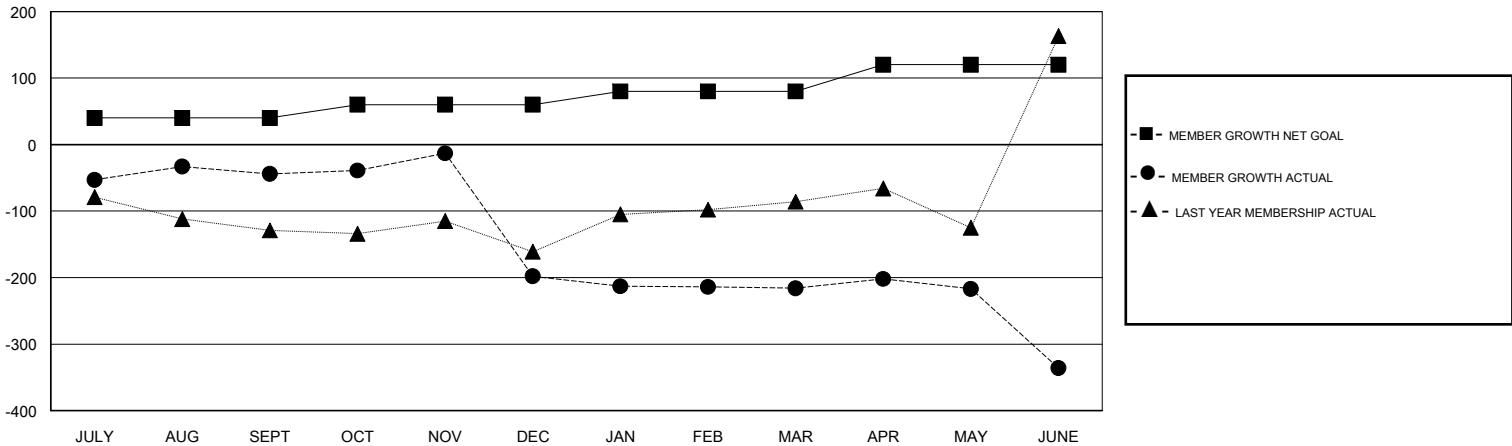
Clubs			
RESULTS FOR 2018-2019			
QUARTER	NEW CLUB GOAL	NEW CLUBS	DROPPED CLUBS
JULY/AUG/SEPT	2	1	0
OCT/NOV/DEC	1	0	5
JAN/FEB/MAR	1	0	1
APR/MAY/JUNE	2	0	1

Members			
RESULTS FOR 2018-2019			
QUARTER	MEMBER GROWTH NET GOAL	MEMBER GROWTH ACTUAL	DROPPED MEMBERS ACTUAL (including transfers)
JULY/AUG/SEPT	40	98	103
OCT/NOV/DEC	20	107	242
JAN/FEB/MAR	20	68	62
APR/MAY/JUNE	40	224	206

GOALS AND ACTUAL NEW CLUBS CUMULATIVE



GOALS AND ACTUAL MEMBERS CUMULATIVE



DROPPED CLUBS: 7	46 CLUBS OF 82 ADDED 1 OR MORE NEW MEMBERS	<u>GENDER DISTRIBUTION</u> MALE 2,232 (64.68%) FEMALE 1,219 (35.32%) Women Percentage Fiscal Year Goal: 35%
<u>DROPPED MEMBERS</u> DECEASED 14 CLUB CANCELLED 167 OTHER 432 TOTAL 613	CLICK HERE FOR CUMULATIVE MEMBERSHIP DATA	TOTAL FAMILY UNIT MEMBERS 2,248 FAMILY MEMBERS PAYING HALF DUES 1,388